

'Bach & Co'

E \flat Horn 1

I Menuet

Kees Schoonenbeek

Allegretto $\text{♩} = 125$

9 *mf*

17

8 *mf*

32

13 *mf*

52

60

4 *mf*

71

8 *mf*

86

13 *mf*

106

4 *mf*

114

4 *mf*

125

12 *mf*

Andante ♩ = 70

II Aria

40

46

52

58

74

7

f *mf* *mf* *mp*

Detailed description: This system contains five staves of music for the 'II Aria'. The first staff starts with a 40-measure rest, followed by a melodic line with dynamics *f* and *mf*. The second staff continues the melody with a *f* dynamic. The third staff features a rhythmic accompaniment of eighth notes with a *mf* dynamic. The fourth staff continues the melody with a *mf* dynamic. The fifth staff concludes the system with a 7-measure rest, a melodic phrase, another 7-measure rest, and a final note with a *mp* dynamic.

Allegro ♩ = 60

III March

9

21

29

41

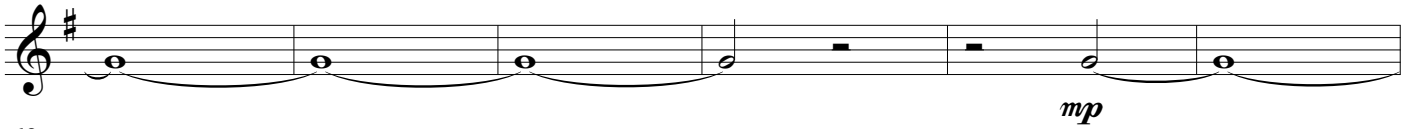
52

3

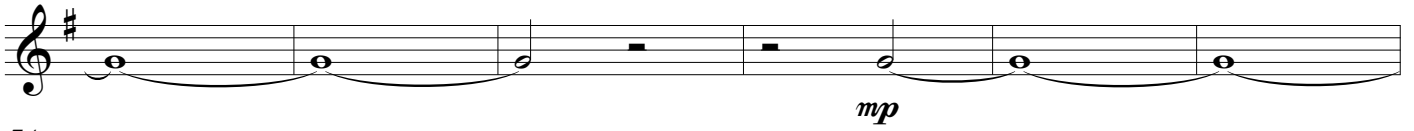
f *mf* *f* *mf* *f* *mf* *f* *mf*

Detailed description: This system contains five staves of music for the 'III March'. The first staff begins with a 9-measure rest, followed by a rhythmic pattern with a *f* dynamic. The second staff continues with a 7-measure rest, a melodic phrase, and a *mf* dynamic. The third staff features a 3-measure rest, a rhythmic pattern, and a *f* dynamic. The fourth staff starts with a 7-measure rest, a melodic phrase, and a *mf* dynamic. The fifth staff concludes with a 5-measure rest, a melodic phrase, a 2-measure rest, a rhythmic pattern, and a *f* dynamic.

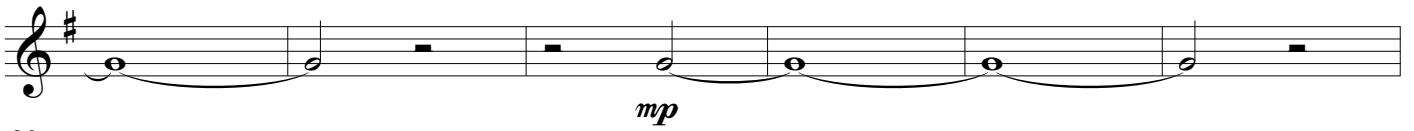
62



68



74



80



86

