

'Bach & Co'

Kees Schoonenbeek

I Menuet

Allegretto ♩ = 125

9 *mf*

17

25

33

41 *mp*

50 *mf*

68 *mf*

83 *mf*

98 *mf*

106 *mf*

128 *mf*

II Aria

Andante ♩ = 70

39

mf

45

51

57

9

mf

71

77

83

2

mf

90

mp

Detailed description: This block contains the musical notation for the Aria section, measures 39 through 90. The music is written in bass clef with a key signature of two flats (B-flat and E-flat) and a 3/4 time signature. It features a variety of note values including quarter, eighth, and sixteenth notes, as well as rests. Dynamic markings include *mf* (mezzo-forte) and *mp* (mezzo-piano). There are several slurs and accents throughout the piece. Measure numbers 39, 45, 51, 57, 71, 77, 83, and 90 are indicated at the start of their respective staves. A fermata is present over a note in measure 83.

Allegro ♩ = 60

III March

mp

7

f

15

f

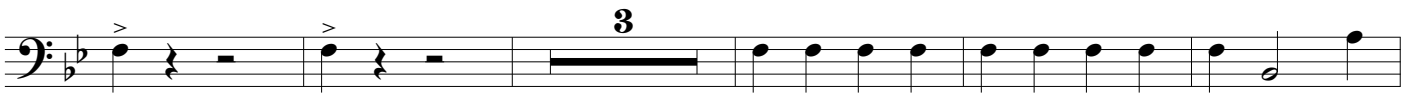
21

mf

f

Detailed description: This block contains the musical notation for the March section, measures 7 through 21. The music is written in bass clef with a key signature of two flats (B-flat and E-flat) and a 3/4 time signature. It features a variety of note values including quarter, eighth, and sixteenth notes, as well as rests. Dynamic markings include *f* (forte) and *mf* (mezzo-forte). There are several slurs and accents throughout the piece. Measure numbers 7, 15, and 21 are indicated at the start of their respective staves. A fermata is present over a note in measure 15.

27



35



50



57



66



76



84

