

B \flat , Bariton

From 'Klavierbüchlein für Anna Magdalena Bach'

'Bach & Co'

Kees Schoonenbeek

I Menuet

Allegretto $\text{♩} = 125$

9 *mf*

17

25

33

41 *mp*

50 *mf*

68 *mf*

83 *mf*

98 *mf*

106 *mf*

128 *mf*

II Aria

Andante ♩ = 70

39

mf

45

51

57

9

mf

71

77

83

2

mf

90

mp

Detailed description: This block contains the musical notation for the Aria section, measures 39 through 90. The music is written in bass clef with a key signature of one flat (B-flat) and a 3/4 time signature. It begins with a fermata over measure 39. The dynamics are marked *mf* (mezzo-forte) and *mp* (mezzo-piano). There are several slurs and accents throughout the piece. Measure numbers 39, 45, 51, 57, 71, 77, 83, and 90 are indicated at the start of their respective lines. A fermata is present over measure 90.

Allegro ♩ = 60

III March *mp*

7

f

f

15

f

21

mf

f

Detailed description: This block contains the musical notation for the March section, measures 7 through 21. The music is written in bass clef with a key signature of one flat (B-flat) and a 3/4 time signature. It begins with a fermata over measure 7. The dynamics are marked *f* (forte) and *mf* (mezzo-forte). There are several slurs and accents throughout the piece. Measure numbers 7, 15, and 21 are indicated at the start of their respective lines. A fermata is present over measure 21.

27



35



50



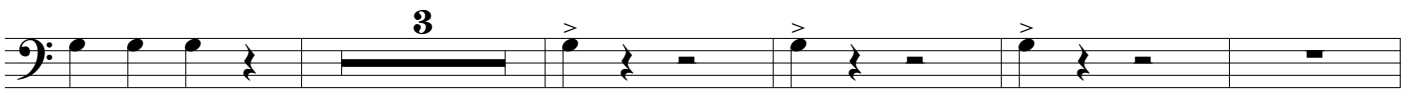
57



66



76



84

