

'La Primavera'

Kees Schoonenbeek

Allegretto $\text{♩} = 60$

3

mf

9

15

21

2

mf

28

2

34

mf

42

9

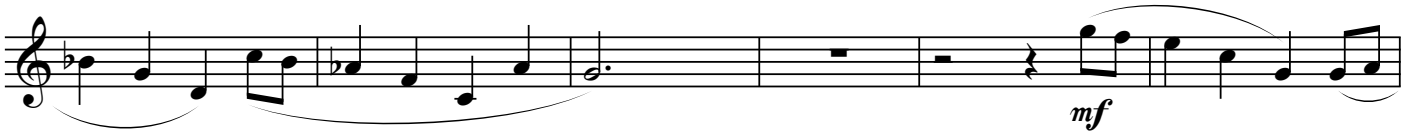
mf

56

62

67

74



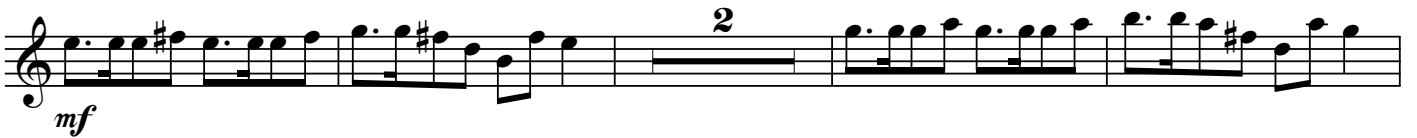
80



86



93



99



106



113



119



II

Adagio espressivo $\text{♩} = 40$

Musical score for the first section of 'La Primavera', measures 1-24. The music is in 3/4 time and begins with a dynamic marking of *mp*. It features a melodic line with frequent double bar lines and fermatas, and a bass line with a steady eighth-note accompaniment. The key signature changes from one sharp (F#) to one flat (Bb) at measure 19.

Susato 'Ronde I, Pour Quoy'

Piu Mosso $\text{♩} = 60$

Musical score for the second section of 'La Primavera', measures 25-53. The tempo is marked *Piu Mosso* with a metronome marking of $\text{♩} = 60$. The dynamic marking is *mf*. The music is in 3/4 time and features a melodic line with frequent double bar lines and fermatas, and a bass line with a steady eighth-note accompaniment. The key signature changes from one flat (Bb) to one sharp (F#) at measure 35.

